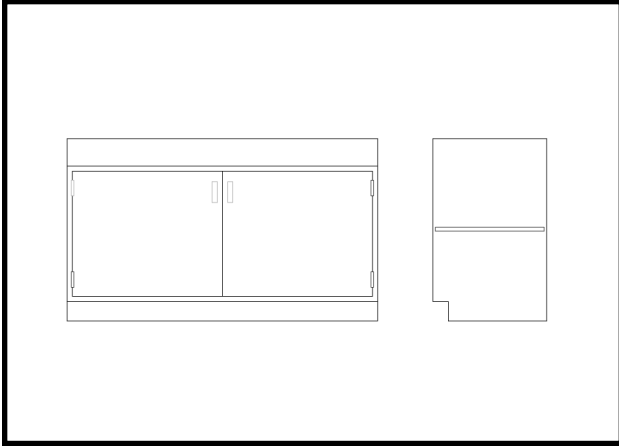


HOOD AND CONSOLE BASE CABINETS



BHLR SERIES

Isolation Systems, Inc. offers a line of high quality base cabinets for use under hood and console units. Fabricated of 16 ga. 304 or 316L stainless steel with #4 finish, these cabinets provide utility storage beneath, as well as add to the aesthetic appeal of our units. Each cabinet is a completely welded assembly providing a totally rigid supporting structure under our hoods and consoles. These cabinets are of flush-front construction providing easy cleanability. The interiors are also flush and smooth at all transitions, incorporating turned-up floor pan construction to further enhance wipedown and cleanability. We are sure you will find the quality of these cabinets exceptional.

Thank you for considering **Isolation Systems, Inc.** for your airborne contamination control needs.

STANDARD FEATURES:

- Solid 16 ga. 304 stainless steel construction with #4 finish.
- All welded construction.
- Heavy-duty laboratory grade hinges and hardware.
- Full flush-front construction.
- Heavy-duty adjustable leg levelers.
- Heavy-duty interior shelf.

OPTIONAL FEATURES:

- Solid 316L stainless steel construction with #4 finish.
- Flammable-storage grade construction
- Acid-storage grade construction. (polypropylene lined).
- Combination acid- and flammable-grade storage
- Locks.
- Vents.
- Drawer units (specify drawer sizes).
- Combination door and drawer units.

NOTE:

Isolation Systems, Inc. inspection reports available upon request.

- Approval drawings available upon request

| MODEL | UNIT DIMENSIONS | DOORS | SHIP WT |
|----------|--------------------|-------|---------|
| HD-BC-42 | 22"d x 48"w x 29"h | 2 | 170 lb |
| HD-BC-43 | 22"d x 48"w x 35"h | 2 | 180 lb |
| HD-BC-52 | 22"d x 60"w x 29"h | 2 | 230 lb |
| HD-BC-53 | 22"d x 60"w x 35"h | 2 | 240 lb |
| HD-BC-62 | 22"d x 72"w x 29"h | 4 | 280 lb |
| HD-BC-63 | 22"d x 72"w x 35"h | 4 | 290 lb |

**All information herein is subject to change without notice.*

**All catalog dimensions are nominal.*

**All shipping weights estimated.*

IMPORTANT:

When ordering for use with VLR or VLE series units, blank space-filler kits must be used (Part # BFK-29 or BFK-35) Note that the "29" and "35" represent cabinet heights.



© 7/2021