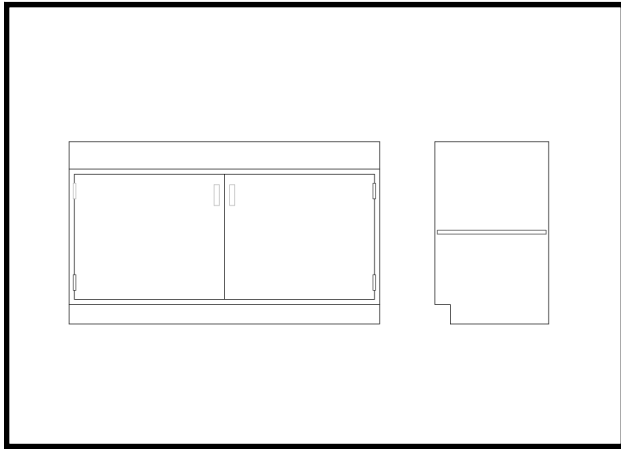


HOOD AND CONSOLE BASE CABINETS



BHLR SERIES

Isolation Systems, Inc. offers its' line of high quality base cabinets for use under its' hood and console units. Fabricated of 18 ga. 304 or 316L stainless steel with #4 finish, these cabinets provide utility storage beneath, as well as add to our units' aesthetic appeal. Each cabinet is a completely welded assembly providing a totally rigid supporting structure under our hoods and consoles. These cabinets are of flush-front construction providing easy cleanability. The interiors are also flush and smooth at all transitions, incorporating turned-up floor pan construction to further enhance wipedown and cleanability. We are sure you will find the quality of these cabinets exceptional.

Thank you for considering **Isolation Systems, Inc.** for your airborne contamination control needs.

NOTE:

Isolation Systems, Inc. inspection reports available upon request.

- **Approval drawings available upon request**

STANDARD FEATURES

- Solid 18 ga. 304 stainless steel construction with #4 finish.
- All welded construction.
- Heavy-duty laboratory grade hinges and hardware.
- Full flush-front construction.
- Heavy-duty adjustable leg levelers.
- Heavy-duty interior shelf.

OPTIONAL FEATURES

- Solid 316L stainless steel construction with #4 finish.
- Flammable-storage grade construction.
- Acid-storage grade construction. (polypropylene lined).
- Combination acid- and flammable- grade storage construction.
- Locks.
- Vents.
- Drawer units. (specify drawer sizes).
- Combination door and drawer units.

MODEL #	UNIT DIM	DOORS	SHIP WT
BHLR-42-AC	22"d x 48"w x 29"h	2	170 lb
BHLR-43-AC	22"d x 48"w x 35"h	2	180 lb
BHLR-52-AC	22"d x 60"w x 29"h	2	230 lb
BHLR-53-AC	22"d x 60"w x 35"h	2	240 lb
BHLR-62-AC	22"d x 72"w x 29"h	4	280 lb
BHLR-63-AC	22"d x 72"w x 35"h	4	290 lb

unit pricing provided upon request

IMPORTANT:

When ordering for use with VLR or VLE series units, blank space-filler kits must be used (Part # BFK-29 or BFK-35) Note that the "29" and "35" represent cabinet heights.

*All information herein is subject to change without notice
All shipping weights estimated.*

all catalog dimensions are nominal.



Isolation Systems Inc.

Revised 11/2015